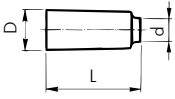


### 3921

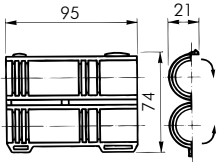
### Cap for protective sleeve, two colours



d	Code	£	SP	g																
16 red	760 854 986	0.27	10	6																
16 green	760 854 987	0.27	10	6																
20 red	760 854 988	0.30	10	8																
20 green	760 854 989	0.30	10	8																

### 3926

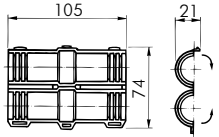
### Cover for protective sleeve



d	Code	£	SP	g																
16	760 853 271	1.12	10	14																

### 3927

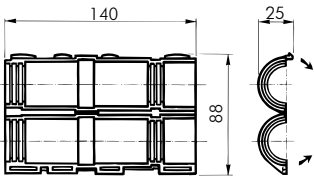
### Coupling for protective sleeve



d	Code	£	SP	g																
16	760 853 272	1.12	2	16																

### 3928

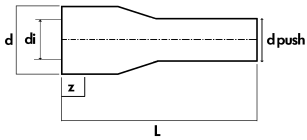
### Cover/coupling for protective sleeve



d	Code	£	SP	g																
20	760 853 742	1.48	5	35																

### 5053

### Adaptor to Push Fit plastic piping systems



d / di - d push	Code	£	SP	g				Ø	L											
20/16 - 15	761 066 326	1.12	10	5				15	51											
25/20 - 22	761 066 327	1.21	10	11				22	63											

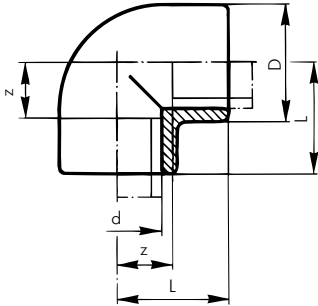
Note: A metal insert is required inside the push fit end of the adaptor.

# Polybutylene Fusion Fittings

## PB Elbows

**5005**

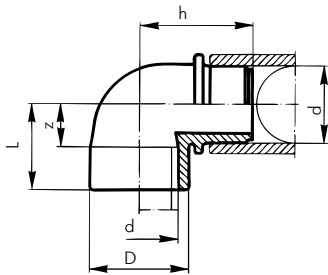
**Elbow 90°** PB pipe to PB pipe



d	Code	£	SP	g	L	D	z						
16	761 066 600	1.00	10	9	25	22	10						
20	761 066 601	1.12	10	12	28	26	13						
25	761 066 602	1.29	10	19	32	32	14						
32	761 066 603	2.06	10	35	38	40	18						
40	761 066 604	3.72	10	64	44	51	22						
50	761 066 605	5.20	10	111	51	64	26						
63	761 066 606	6.00	2	216	62	81	34						
75	761 066 607	15.35	2	300	75	91	42						
90	761 066 608	22.90	2	440	87	108	51						
110	761 066 609	39.25	2	800	105	132	63						

**5008**

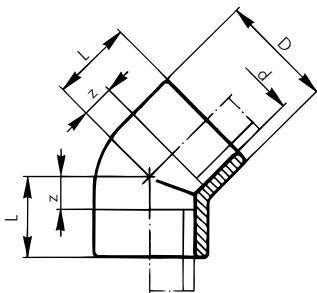
**Elbow 90°**, socket-spigot, PB pipe to PB fitting



d	Code	£	SP	g	L	D	h	z					
16	761 066 900	1.06	10	9	25	22	34	10					
20	761 066 901	1.19	10	12	28	26	36	13					
25	761 066 902	1.59	10	21	32	32	44	14					
32	761 066 903	2.42	10	37	38	40	50	18					
40	761 066 904	4.84	5	67	44	51	58	22					
50	761 066 905	9.95	5	122	51	64	70	26					
63	761 066 906	13.55	2	233	62	81	82	34					

**5010**

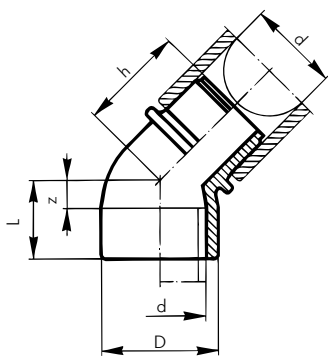
**Elbow 45°** PB pipe to PB pipe



d	Code	£	SP	g	L	D	z						
16	761 066 610	1.71	10	8	21	22	6						
20	761 066 611	1.83	10	10	22	26	7						
25	761 066 612	1.94	10	16	25	32	7						
32	761 066 613	2.66	10	29	30	40	10						
40	761 066 614	3.95	5	50	34	51	12						
50	761 066 615	6.00	5	90	39	64	14						
63	761 066 616	7.60	2	167	45	81	17						
75	761 066 617	17.70	2	210	51	92	18						
90	761 066 618	26.50	2	440	58	113	21						
110	761 066 619	45.70	2	580	68	134	25						

**5018**

**Elbow 45°**, socket-spigot, PB pipe to PB fitting

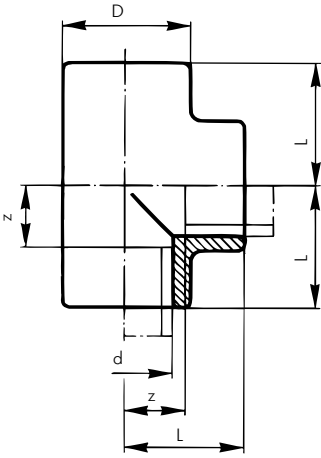


d	Code	£	SP	g	L	D	h	z					
16	761 066 907	1.83	10	8	21	22	29	6					
20	761 066 908	1.94	10	11	22	26	30	7					
25	761 066 909	2.06	10	17	25	32	35	7					
32	761 066 910	2.82	10	32	30	40	40	10					
40	761 066 911	5.15	5	55	34	51	46	12					
50	761 066 912	9.45	5	99	39	64	53	14					
63	761 066 913	11.80	2	180	45	81	62	17					

# PB Tees

## 5015

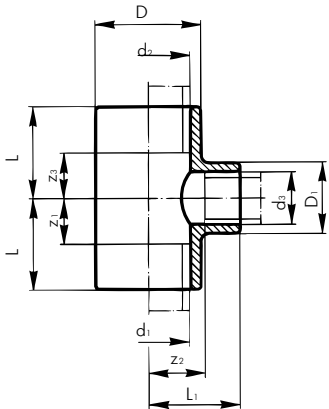
### Tee 90° equal PB pipe to PB pipe



d	Code	£	SP	g	L	D	z						
16	761 066 620	1.29	10	11	25	22	10						
20	761 066 621	1.59	10	15	28	26	13						
25	761 066 622	1.71	10	24	32	32	14						
32	761 066 623	2.42	10	42	38	40	18						
40	761 066 624	4.84	10	83	44	51	22						
50	761 066 625	6.45	10	143	51	64	26						
63	761 066 626	10.45	5	273	62	81	34						
75	761 066 627	20.45	2	380	75	91	42						
90	761 066 628	28.05	2	750	87	112	51						
110	761 066 629	45.70	2	1150	105	132	63						

## 5020

### Tee 90° reducing PB pipe to PB pipe

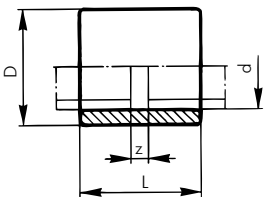


d1-d2-d3	Code	£	SP	g	D	D1	L	L1	z1	z2	z3				
20-20-16	761 066 914	1.83	10	15	26	22	28	28	13	13	13				
20-16-16	761 066 915	1.83	10	16	26	22	28	28	13	13	13				
20-16-20	761 066 916	1.83	10	17	26	26	28	28	13	13	13				
25-25-16	761 066 917	2.06	10	25	32	26	32	32	14	17	14				
25-25-20	761 066 918	2.06	10	23	32	26	32	32	14	17	14				
25-20-20	761 066 919	2.06	10	26	32	26	32	32	14	17	17				
25-20-25	761 066 920	2.06	10	27	32	32	32	32	17	17	17				
32-32-16	761 066 921	2.71	10	41	40	26	38	38	18	23	18				
32-32-20	761 066 922	2.71	10	39	40	26	38	38	18	23	18				
32-32-25	761 066 923	2.71	10	41	40	32	38	38	18	20	18				
40-40-16	761 066 295	4.84	5	85	51	34	44	22	22	29	22				
40-40-25	761 066 924	4.84	5	77	51	34	44	44	22	26	22				
50-50-16	761 066 309	6.45	5	138	64	34	51	51	26	36	26				
50-50-25	761 066 925	6.45	5	130	64	34	51	51	26	33	26				
63-63-16	761 066 310	10.45	5	260	81	35	62	62	34	47	34				
63-63-25	761 066 926	10.45	5	252	81	35	62	62	34	44	34				

# PB Sockets and Reducers

## 5040

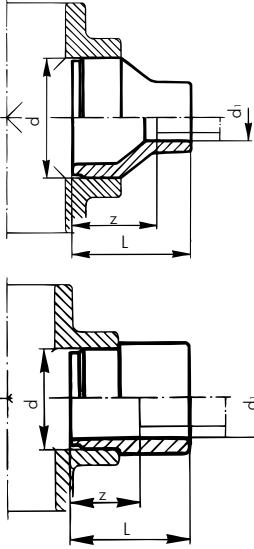
### Equal socket PB pipe to PB pipe



d	Code	£	SP	g	L	D	z						
16	761 066 660	0.95	10	6	33	22	3						
20	761 066 661	1.06	10	7	33	26	3						
25	761 066 662	1.19	10	12	39	32	3						
32	761 066 663	1.83	10	20	43	40	3						
40	761 066 664	2.89	10	37	48	51	4						
50	761 066 665	4.19	10	64	54	64	4						
63	761 066 666	5.20	2	115	60	81	4						
75	761 066 667	12.85	2	150	69	91	4						
90	761 066 668	16.85	2	250	80	110	6						
110	761 066 669	24.45	2	440	94	133	8						

# 5045

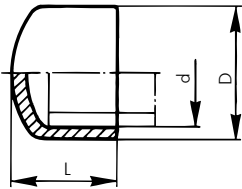
## Reducer PB fitting to PB pipe



d-d <sub>1</sub>	Code	£	SP	g			L	z						
20-16	761 066 670	1.06	10	5			30	15						
25-16	761 066 671	1.29	10	7			33	18						
25-20	761 066 672	1.29	10	7			33	18						
32-20	761 066 674	1.71	10	11			40	25						
32-25	761 066 675	1.71	10	12			40	22						
40-20	761 066 677	2.18	10	17			42	27						
40-25	761 066 678	2.18	10	17			42	24						
40-32	761 066 679	2.18	10	20			42	22						
50-20	761 066 681	3.95	10	34			55	40						
50-25	761 066 682	3.95	10	31			55	37						
50-32	761 066 683	3.95	10	34			55	35						
50-40	761 066 684	3.95	10	40			55	33						
63-20	761 066 686	5.60	5	52			58	43						
63-25	761 066 687	5.60	5	51			58	40						
63-32	761 066 688	5.60	5	52			58	38						
63-40	761 066 689	5.60	5	56			58	36						
63-50	761 066 690	5.60	5	66			58	33						
75-63	761 066 742	14.05	2	100			67	39						
90-63	761 066 746	21.65	2	149			74	46						
90-75	761 066 745	21.65	2	140			74	41						
110-63	761 066 747	27.25	2	229			86	58						
110-75	761 066 749	27.25	2	234			86	53						
110-90	761 066 748	27.25	2	230			86	49						

# 5050

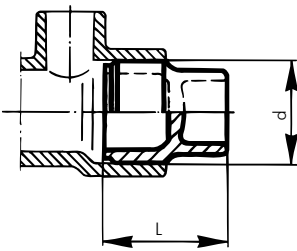
## End cap PB pipe



d	Code	£	SP	g			L	D						
16	761 066 650	0.95	10	4			22	22						
20	761 066 651	1.06	10	6			24	26						
25	761 066 652	1.24	10	9			28	32						
32	761 066 653	1.83	10	16			32	40						
40	761 066 654	3.18	10	32			38	51						
50	761 066 655	6.00	10	57			44	64						
63	761 066 656	6.85	5	106			50	81						

# 5051

## Plug PB fitting

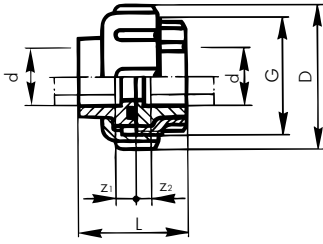


d	Code	£	SP	g			L							
25	761 066 938	1.71	10	7			33							
32	761 066 939	2.18	10	7			40							

# Unions

## 5035

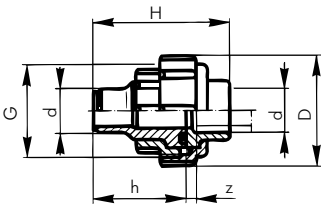
**Union, PB pipe to PB pipe**  
including EPDM O-Ring, (suitable for potable water)



d	Code	£	SP	g	L	z <sub>1</sub>	z <sub>2</sub>	G	D
16	761 066 691	9.95	10	150	43	8	5	1	41
20	761 066 692	10.85	10	180	43	8	5	1 1/4	50
25	761 066 693	11.60	10	210	49	8	5	1 1/2	56
32	761 066 694	14.30	5	290	53	8	5	2	69
40	761 066 695	22.05	5	460	59	10	5	2 1/2	83
50	761 066 696	23.95	2	490	65	10	5	2 3/4	90
63	761 066 697	35.55	2	710	71	10	5	3 1/2	110

## 5034

**Union, socket-spigot, PB pipe to PB fitting**  
including EPDM O-Ring, (suitable for potable water)

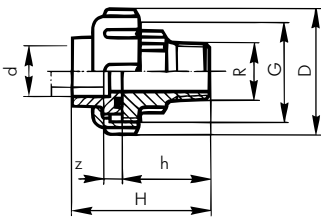


d	Code	£	SP	g	H	h	z	G	D
*16	761 066 739	9.95	10	155	62	42	5	1	41
*20	761 066 740	10.85	10	190	62	42	5	1 1/4	50
*25	761 066 993	11.60	10	220	70	47	5	1 1/2	56
*32	761 066 994	14.35	5	305	76	51	5	2	69

\*Available on 2 week delivery

## 5036

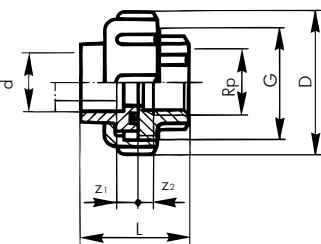
**Adaptor union, socket-PB pipe with nickel plated brass male BSP thread**  
including EPDM O-Ring, (suitable for potable water)



d-R	Code	£	SP	g	H	h	z	G	D
16-1/2	761 066 698	8.85	10	250	61	38	8	1	41
20-1/2	761 066 699	9.70	10	260	63	40	8	1 1/4	50
25-3/4	761 066 700	11.20	10	300	67	41	8	1 1/2	56
32-1	761 066 701	14.30	5	430	73	45	8	2	69
40-1 1/4	761 066 702	23.65	5	640	80	48	10	2 1/2	83
50-1 1/2	761 066 703	27.90	2	730	83	48	10	2 3/4	90
63-2	761 066 704	37.15	2	1050	92	54	10	3 1/2	104

## 5037

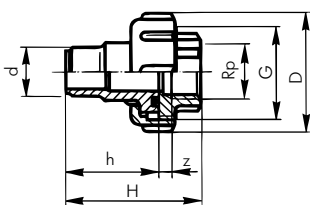
**Adaptor union, socket-PB pipe with nickel plated brass female BSP thread**  
including EPDM O-Ring (suitable for potable water)



d-Rp	Code	£	SP	g	L	z <sub>1</sub>	z <sub>2</sub>	G	D
16-1/2	761 066 705	7.95	10	200	45	8	9	1	41
20-1/2	761 066 706	8.50	10	220	47	8	10	1 1/4	50
25-3/4	761 066 707	9.70	10	270	50	8	9	1 1/2	56
32-1	761 066 708	13.45	5	370	53	8	8	2	69
40-1 1/4	761 066 709	21.70	5	540	58	10	7	2 1/2	83
50-1 1/2	761 066 710	27.05	2	630	61	10	7	2 3/4	90
63-2	761 066 711	35.25	2	900	66	10	5	3 1/2	110

## 5039

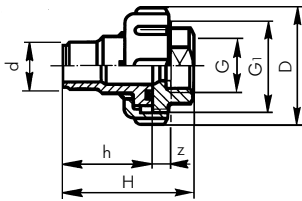
**Adaptor union, spigot-PB fitting with metal female screw thread**  
including EPDM O-Ring (suitable for potable water)



d-Rp	Code	£	SP	g	H	D	z	h	G
*20-1/2	761 066 978	8.50	10	230	66	50	10	42	1 1/4
*25-3/4	761 066 977	9.70	10	270	71	56	9	47	1 1/2
*32-1	761 066 992	13.45	5	370	76	69	8	51	2

\*Available on 2 week delivery

## 5032

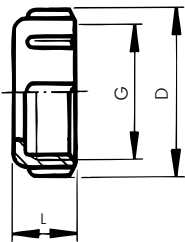


\*Available on 2 week delivery

**Adaptor union**, spigot, PB fitting with metal female BSP thread including EPDM O-Ring (suitable for potable water)

d-G	Code	£	SP	g			H	h	z	G <sub>1</sub>	D			
*25-3/4	761 066 998	9.70		290			70	47	11	1 1/2	52			
*25-1	761 066 999	10.90		290			70	47	11	1 1/2	52			
*32-1	761 066 288	13.45		390			74	51	11	2	64			

## 5081

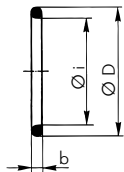


### Union nut

suitable for flange adaptor (cat. no. 5030 & 5031 pages 10 & 11)

d-G	Code	£	SP	g			L	D						
16-1	761 066 980	2.42	10	90			26	41						
20-1 1/4	761 066 971	2.82	10	94			22	50						
25-1 1/2	761 066 972	3.42	10	109			23	56						
32-2	761 066 973	4.45	10	137			23	69						
40-2 1/2	761 066 974	8.00	10	220			26	83						
50-2 3/4	761 066 975	9.20	10	241			26	90						
63-3 1/2	761 066 976	12.50	2	313			27	110						

## 5080



### O-Ring, EPDM quality for potable water

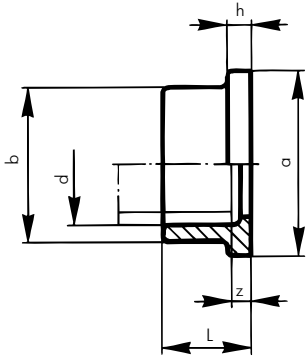
d	Code	£	SP	g			i	D	b					
16	748 410 000	0.75	10	1			18.6	25.7	3.5					
20	748 410 001	0.75	10	1			23.4	30.5	3.5					
25	748 410 007	0.88	10	1			28.2	35.2	3.5					
32	748 410 002	1.04	10	2			36.1	43.2	3.5					
40	748 410 003	1.17	10	3			43.8	54.5	5.3					
50	748 410 012	1.29	10	4			53.3	64.0	5.3					
63	748 410 013	1.47	10	5			69.2	79.9	5.3					
75	748 410 014	1.71	5	6			81.9	92.5	5.3					
90	748 410 015	2.88	5	8			101	111.6	5.3					
110	748 410 016	3.43	5	16			120	134	7.0					

# Flanges Gaskets & Backing Rings

5030

## Flange adaptor flat

suitable for +GF+ galvanised steel flanges Cat.No. 24 70 16 - page 13  
& for GRP Flanges Cat. No. 5085 - page 13

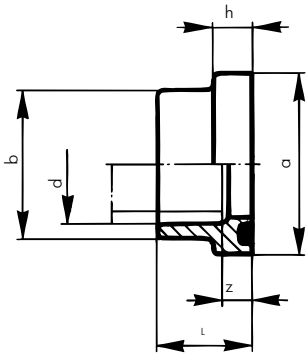


d	Code	£	SP	g	L	h	a	b	z
16	761 066 630	1.29	10	5	20	6	29	22	5
20	761 066 631	1.42	10	7	20	6	34	27	5
25	761 066 632	1.53	10	11	23	7	41	33	5
32	761 066 633	1.94	10	17	25	7	50	41	5
40	761 066 634	2.89	10	26	27	8	61	50	5
50	761 066 635	4.06	10	38	30	8	73	61	5
63	761 066 636	6.00	2	63	33	9	90	76	5
75	761 066 637	10.30	2	90	35	10	106	90	4
90	761 066 638	18.45	2	147	42	11	125	109	6
110	761 066 639	27.35	2	230	49	12	150	131	7

5031

## Flange adaptor with groove

including EPDM 'O' Ring (suitable for potable water)  
suitable for +GF+ galvanised steel flanges cat. no.24  
70 00 and for GRP Flanges Cat. No. 5085 - page 13

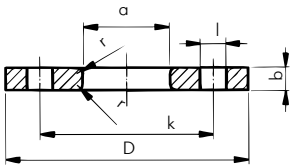


d	Code	£	SP	g	L	h	a	b	z
16	761 066 640	1.68	10	7	23	9	29	22	8
20	761 066 641	1.80	10	9	23	9	34	27	8
25	761 066 642	1.97	10	14	26	10	41	33	8
32	761 066 643	2.48	10	21	28	10	50	41	8
40	761 066 644	3.60	10	34	32	13	61	50	10
50	761 066 645	4.42	10	49	35	13	73	61	10
63	761 066 646	6.65	2	77	38	14	90	76	10
75	761 066 647	11.40	2	109	40	15	106	90	9
90	761 066 648	19.60	2	185	47	16	125	109	11
110	761 066 649	29.55	2	290	55	18	150	131	13

24 70 16

## Galvanised steel backing flange

suitable for PB flange adaptors (cat. no. 5030 & 5031 pages 10 & 11)  
Galvanised mild steel drilled to BS 4504: 1969 NP10/16



d	Code	£	SP	g	D	a	k	b	l	bolt holes	bolts
20	724 701 606	4.49	1	220	95	28	65	7	15	4	M12 x 55
25	724 701 607	4.66	1	320	105	34	75	7	15	4	M12 x 60
32	724 701 608	5.20	1	410	115	42	85	7	15	4	M12 x 60
40	724 701 609	5.30	1	820	140	51	100	8	15	4	M16 x 70
50	724 701 610	6.55	1	1040	150	62	110	8	15	4	M16 x 75
63	724 701 611	9.25	1	1220	165	78	125	10	18	4	M16 x 80
75	724 701 612	12.70	1	1400	185	92	145	10	18	4	M16 x 85
90	724 701 613	14.05	1	1530	200	110	160	10	18	8	M16 x 90
110	724 700 014	18.20	1	1840	220	133	180	10	18	8	M16 x 95