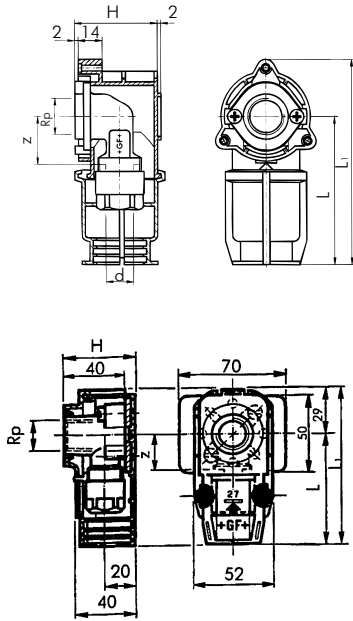


# Outlet Joints

Wall recessed outlets with protective housing supporting protective sleeve

## 3000

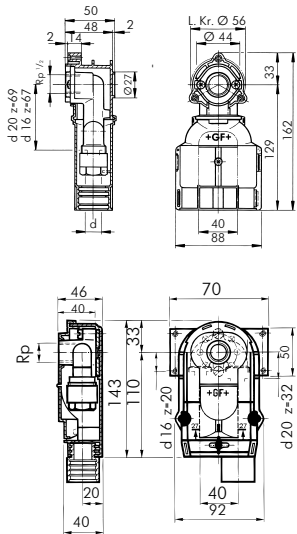
Single pipe outlet PB pipe with female BSP thread



d-Rp	Code	£	SP	g			H	L	L <sub>1</sub>	z				
16-1/2	760 869 914	7.70	10	180			48	86	119	28				
20-1/2	760 856 021	11.40	1	400			46	100	129	28				
20-3/4	760 856 022	21.70	1	420			46	100	129	28				

## 3002

Dual pipe outlet PB pipe with female BSP thread

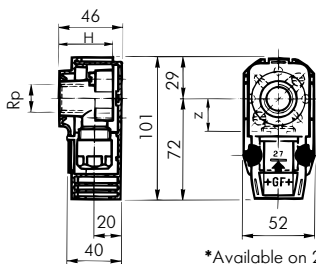


d-d-Rp	Code	£	SP	g										
*16-16-1/2	760 856 023	18.00	10	490										
*16-20-1/2	760 856 027	22.55	1	570										
*20-16-1/2	760 856 029	22.55	1	570										
*20-20-1/2	760 856 025	23.75	1	630										
*16-16-3/4	760 856 024	26.20	1	510										
*16-20-3/4	760 856 028	31.95	1	590										
*20-16-3/4	760 856 030	31.95	1	590										
*20-20-3/4	760 856 026	36.30	1	650										

\*Available on 2 week delivery

## 3006

Single pipe outlet, without plate PB pipe with female BSP thread to slide on to distance plate and plate for single mounting (page 36)

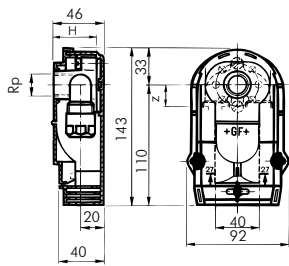


\*Available on 2 week delivery

<sup>1)</sup> assembly only on plate cat. no. 3817, p36

d-Rp	Code	£	SP	g			H	z					
*16-1/2	760 853 075	7.70	10	260			40	26					
*20-1/2 <sup>1)</sup>	760 854 606	24.35	1	290			40	28					
*20-3/4 <sup>1)</sup>	760 856 015	28.45	1	310			40	28					

## 3016



d 16 z = 20

d 20 z = 32

\*Available on 2 week delivery

**Dual pipe outlet, without plate** PB pipe with female BSP thread to slide on to distance plate and plate for single mounting (pages 36, 37 & 38)

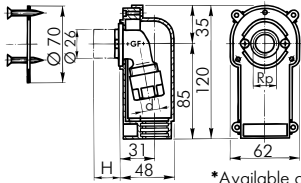
d-Rp	Code	£	SP	g	H								
*16-16-1/2	760 853 076	17.60	10	380	40								
*16-16-3/4	760 856 016	26.05	1	400	40								
*16-20-1/2	760 856 017	26.65	1	460	40								
*16-20-3/4	760 856 018	31.05	1	480	40								
*20-16-1/2	760 856 019	26.65	1	460	40								
*20-16-3/4	760 856 020	31.05	1	480	40								
*20-20-1/2	760 854 614	29.80	1	520	40								
*20-20-3/4	760 854 616	34.15	1	540	40								

## 3056

### Single pipe outlet

PB pipe with female BSP thread.

Suitable for mounting behind lightweight partition walls



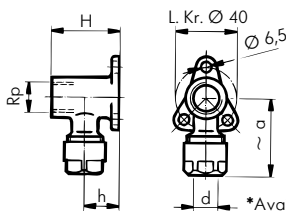
\*Available on 2 week delivery

d-Rp	Code	£	SP	g	H								
*16-1/2	760 854 687	9.45	1	270	7	short							
*16-1/2	760 854 689		1	300	23	long							

## 3032

### Outlet joints without protective housing

**Single pipe outlet, with flange** PB pipe with female BSP thread



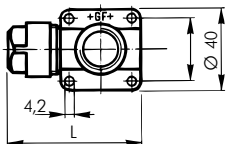
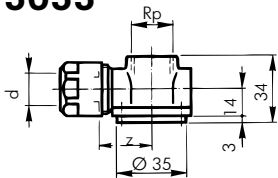
\*Available on 2 week delivery

d-Rp	Code	£	SP	g	H	L	h	z					
16-1/2	760 853 013	4.90	10	214	44	46	22	28					
16-1/2	760 856 036	5.50	2	270	60	46	22	28					
16-1/2	760 856 037	6.50	2	320	80	46	22	28					
*16-1/2	760 856 043	10.85	10	280	100	46	22	28					
16-1/2	760 856 038	11.10	2	360	120	46	22	28					
20-1/2	760 854 682	8.65	10	270	44	50	25	28					
*20-1/2	760 856 044	15.80	10	370	100	50	25	28					
20-3/4	760 853 038	8.85	1	244	44	50	25	28					

## 3033

### Single pipe outlet, for lavatory cistern (interchangeable)

PB pipe with female BSP thread (with screwed connections)



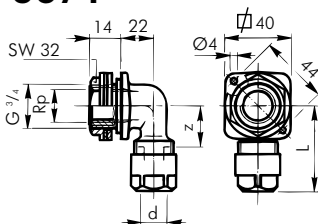
d-Rp	Code	£	SP	g	L	z							
16-1/2	760 853 033	10.90	1 Set	235	90	26							

Consisting of:  
 1 Compression elbow  
 4 Support bolts  
 1 Nozzle  
 2 Protective pipe clamps

## 3071

### Single pipe outlet, for lavatory cistern

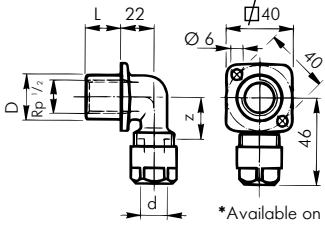
PB pipe including fastening set (not interchangeable) with backing nut connections



d-Rp	Code	£	SP	g	L	z							
16-1/2	760 856 011	9.50	5	260	46	26							

# 3064

## Single pipe outlet, with flange PB pipe with female BSP thread

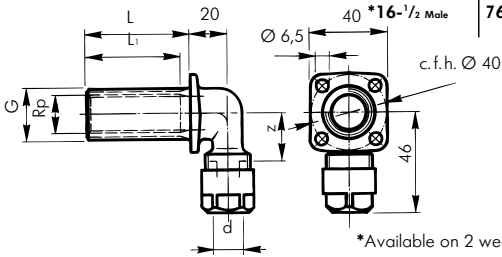


d-Rp	Code	£	SP	g			L	D	z				
*16-1/2	760 869 904	7.40	2	214			20	27	26				

# 3065/6

## Single pipe outlet, with flange

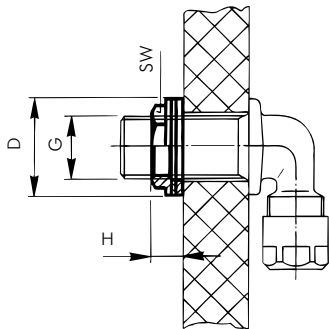
PB pipe with female BSP thread inside, male BSP thread outside



d-Rp-G	Code	£	SP	g			L	L <sub>1</sub>	z				
*16-3/4-1/2	760 856 041	7.30	2	270			30	25	26				
*16-3/4-1/2	760 869 906	9.05	2	290			55	50	26				
*16-3/4-1/2 Dual Pipe Joint	760 869 923	12.40	2	360			100	95	26				
*16-1/2 Male	760 869 922	12.40	2	360			100	95	26				

# 3067

## Fastening set for item 3066 above

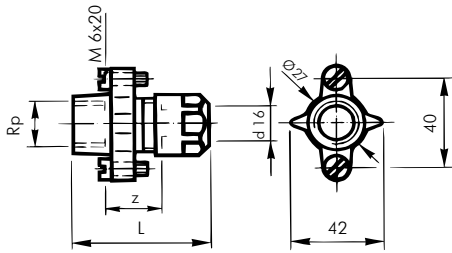


G	Code	£	SP	g			D	H	SW				
*3/4	760 854 699	1.74	10	44			42	11	32				
*1/2	760 869 924	1.86	10										

Consists of: Union nut, washer, seal  
\*Available on 2 week delivery

# 3041

## Single pipe outlet, straight PB pipe, with female BSP thread

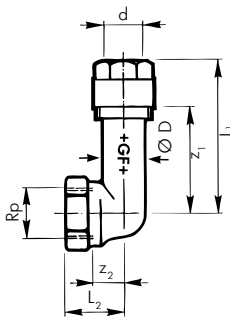


\*Available on 2 week delivery

d-Rp	Code	£	SP	g	L	z								
*16-1/2	760 853 096	7.45	1	175	56	22								

# 3367

## Single pipe outlet, 90° PB pipe, with female BSP thread, suitable for supporting the pipe before the outlet



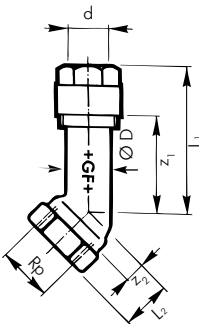
\*Available on 2 week delivery

d-Rp	Code	£	SP	g	L1	L2	z1	z2	D					
*16-1/2	760 854 882	8.00	5	204	67	30	46	17	18					
*20-1/2	760 854 883	9.00	5	210	74	30	48	17	18					
*20-3/4	760 854 884	10.65	5	260	76	30	50	16	18					
*25-3/4	760 854 886	18.05	2	455	90	30	59	16	22					
*32-1	760 854 887	20.70	2	604	100	35	66	21	27					

**For use with compressed air.**

# 3372

## Single pipe outlet, 45° PB pipe, with female BSP thread, suitable for supporting the pipe before the outlet



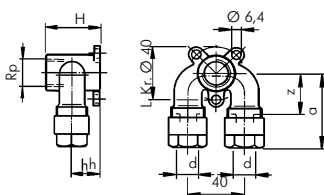
\*Available on 2 week delivery

d-Rp	Code	£	SP	g	L1	L2	z1	z2	D					
*20-1/2	760 854 888	11.00	5	180	68	20	43	7	18					
*25-3/4	760 854 890	17.20	2	415	80	23	49	9	22					
*32-1	760 854 891	21.15	2	554	85	27	51	10	27					

**For use with compressed air.**

# 3043

## Dual pipe outlet PB pipes, with female BSP thread



\*Available on 2 week delivery

d-d-Rp	Code	£	SP	g	H	a	h	z						
*16-16-1/2	760 853 059	14.90	1	305	44	48	22	30						
*16-16-1/2	760 856 045	23.65	1	385	100	48	22	30						
*20-20-1/2	760 869 902	19.55	1	440	44	56	25	32						