



Fulton Ltd specialises in the design and manufacture of steam, hot water and thermal fluid boilers for industrial, commercial and medical applications.

The company has over 45 years of experience and can provide full design, commissioning and aftersales support services. The company's standard range of boilers is backed up by bespoke turnkey capabilities.



Range of Products

Electric Steam Boilers

- ▶ **Compact Steam Boilers**
 - Mini Compack (9kW - 17.5 kW)
 - Midi Compack (24kW - 48kW)
- ▶ **Steam Boilers**
 - Dragon (15kW - 68kW)
 - Electropack (18kW - 100kW)
 - Europack (150kW - 300kW)
- ▶ **Flash Steam Boilers**
 - E.F.S. (24kW - 70kW)
- ▶ **Clean Steam Boilers**
 - CleanSteam (60kW)
- ▶ **Boilers Available with all Stainless Steel Wetted Parts**



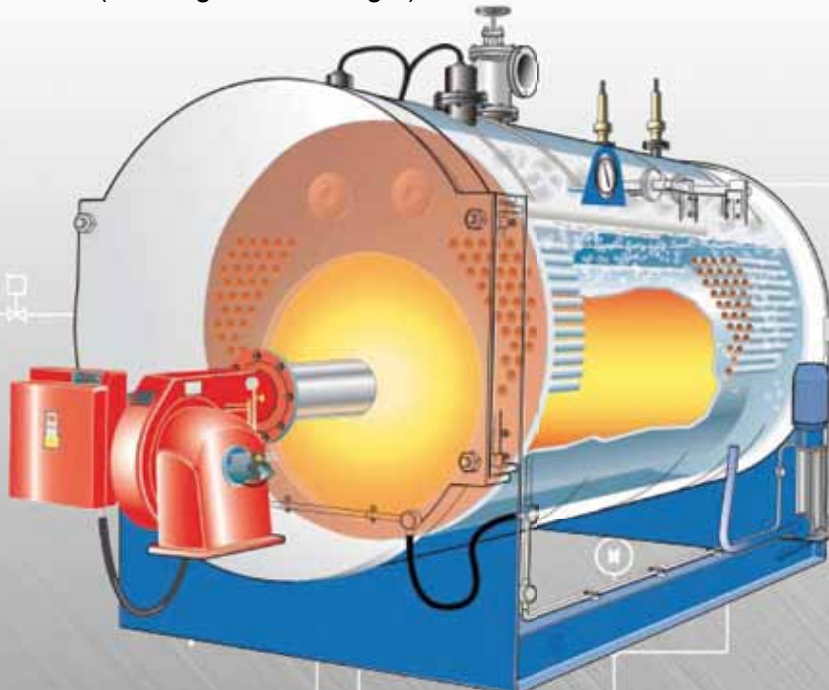
Mini Compack



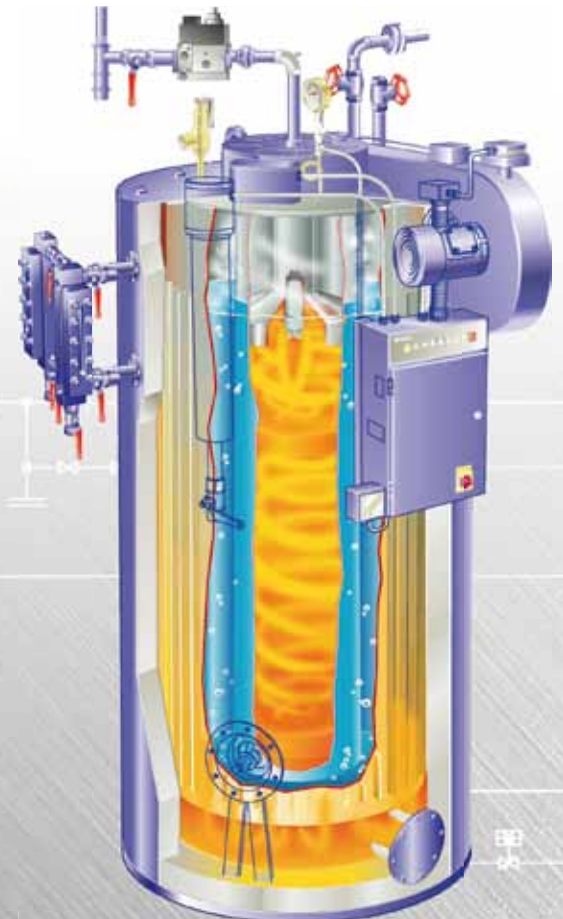
Europack

Fuel Fired Steam Boilers

- ▶ **Vertical Steam Boilers**
 - J Series (96 kg/h - 960 kg/h)
 - VMP (960 kg/h - 2400 kg/h)
- ▶ **Flash Steam Vertical Boilers**
 - JFS (160 kg/h - 320 kg/h steady state
300 kg/h - 680kg/h peak demand)
- ▶ **Horizontal Steam Boilers**
 - RBC (957 kg/h - 4787 kg/h)
 - FBC (5000 kg/h - 25000 kg/h)



RBC Horizontal Steam Boiler



J Series Vertical Steam Boiler



CleanSteam



Electropack



FT-C thermal fluid heater

Boiler Ancillaries

- ▶ Blowdown vessels
- ▶ Feed water & condensate return tanks
- ▶ Water treatment

Thermal Fluid Heaters

Thermal fluid (hot oil) heater systems are provided in association with Fulton Thermal Corporation in the USA. The range includes models with heat outputs of up to 3500kW and operating temperatures of up to 345°C.

Site Services and Installation

▶ Consultation and Selection

Fulton will provide advice regarding the specification and design of the required steam boiler. We will help to select the most appropriate boiler plant and consider any space constraints.

▶ Offsite Fabrication

▶ Design and Manufacture

Using the latest CAD and 3D Modelling Software

▶ Factory Testing

All Fulton boiler plant is test-fired in the factory before dispatch to site.

▶ Sitework

Final connections are made on site. Skids and plant rooms are transportable by road and can be repositioned or moved to a different location with relative ease.

▶ Aftersales Support

Skid-Mounted Systems and Packaged Plant Rooms

Fulton Ltd offer a complete service for the design, commission, manufacture, and assembly of skid-mounted boilers and prefabricated packaged plant rooms.



Two skid-mounted J Series gas boilers



Two skid-mounted Mini Compack electric steam boilers

What are the benefits of having a Skid-Mounted System or Plant Room?

- ▶ All the necessary equipment is arranged compactly in one place, saving space.
- ▶ Skid-mounted boilers and prefabricated plant rooms are both transportable by road and can be repositioned or moved with relative ease.
- ▶ All interconnecting pipework and electrical wiring completed on skid.

When would a Skid-Mount or Plant Room be suitable?

- ▶ When on site work is difficult or limited by time
- ▶ When access is remote or restricted
- ▶ When security is an important consideration

Apart from the boiler, what can it include?

- ▶ Blowdown vessel
- ▶ Feed water tank
- ▶ Feed water pump
- ▶ Water treatment
- ▶ Control system with interconnecting mechanical and electrical services.



Water treatment



Gas fired Hot Water Plant Room



Two-boiler plant room



Fulton Ltd.
Broomhill Road
Bristol BS4 4TU
England



Telephone:
Fax:
E-mail:
Web site:

+44 (0) 117 972 3322
+44 (0) 117 972 3358
uk.sales.office@fulton.com
www.fulton.co.uk