

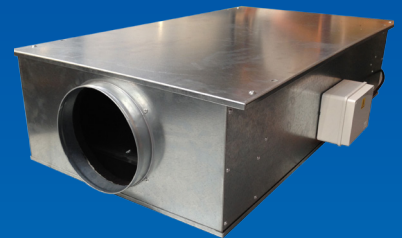
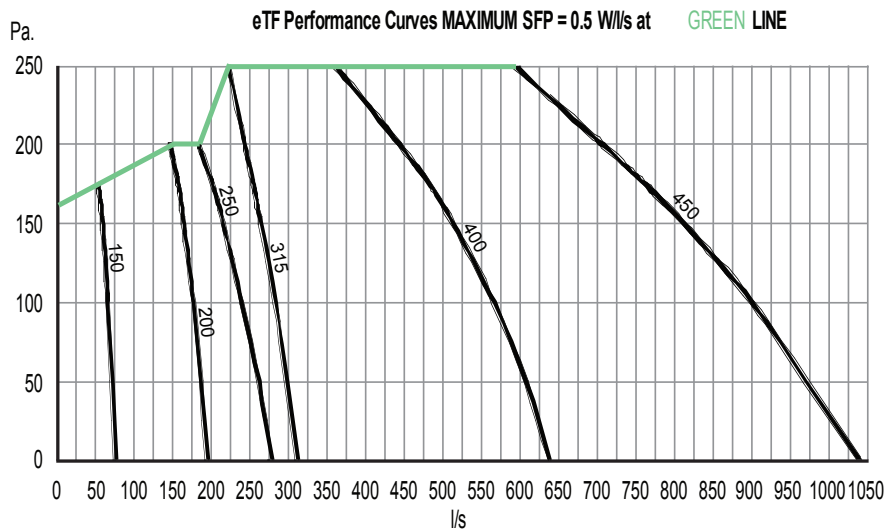
Eco-Airvent™

The eTF range of ducted extract fans offer duties up to 900 l/s installed performance.

Suitable for commercial applications. All fans in this series comply with 0.5 W/l/s SFP as required in the non-Domestic Building Services Directive 2013 on all parts of the fan curves selected below the green line. Manufactured from high quality galvanized sheet steel, fitted with acoustic non-hygroscopic foam and non-overloading 100,000 hour long life, low energy EC fans. Roof Top Twin Fans (eRTF) are also available - see separate catalogue.

**0.36
W/l/s
SFP**
Typical

eTF Acoustic Twin Fans ULTRA LOW ENERGY



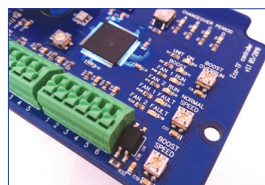
- ✓ FULLY COMPLIANT WITH NON-DOMESTIC BUILDING SERVICES DIRECTIVE 2013
- ✓ 100,000 HOUR LONG LIFE EC FANS
- ✓ ULTRA LOW PROFILE DESIGN

eTF Series Performance Data		External Static Pressure (Pa)					
Model		0	50	100	150	200	250
150	Airflow l/s	75	70	65	58	50	-
200	Airflow l/s	208	200	192	181	166	150
250	Airflow l/s	275	260	235	208	183	146
315	Airflow l/s	311	297	283	264	254	224
400	Airflow l/s	637	606	556	513	450	375
450	Airflow l/s	1000	944	861	778	694	639

ECO-TF

Combined Auto Changeover & Speed Controller

For use in most commercial applications. Integral ECO – SF controller allowing trickle & boost options with speed adjustment. Enable/Disable from BMS/VFC time-switch. Fault output.



Eco-TF Controller



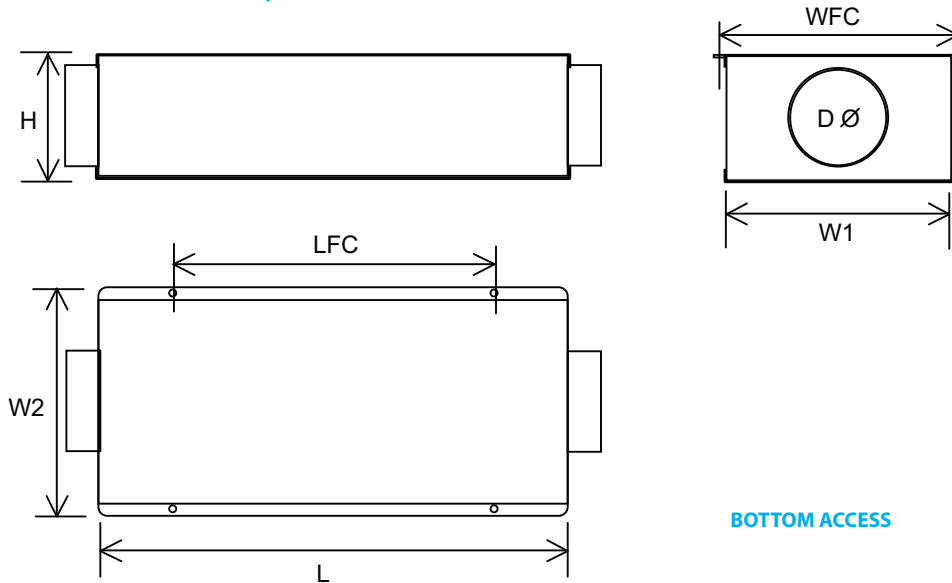
Dimensions:

eTF Acoustic Twin Fans

eTF Series Dimensions: (mm)								
Model	W1	W2	L	H	DØ	LFC	WFC	(kg)
150	335	395	700	190	150	500	365	28
200	490	550	950	240	200	700	520	43
250	550	610	1170	300	250	900	580	54
315	550	610	1170	350	315	900	580	60
400	710	770	1440	440	400	1040	740	88
450	860	960	1800	550	450*	1400	890	116

* eTF450 – 450 SQ. Duct with 20mm MEZ Flange

(Can be installed in any orientation)



eTF Series 230V/1ph/50Hz Electrical & Technical Data								
Model	Nominal Airflow (l/s)	Max. Current (Amps)	Input @ 150Pa. (W)	Unit SFP @ 150Pa.	Unit SFP @ 100Pa.	Unit SFP @ 50Pa.	Max. Ambient deg. C.	Protection Class
150	60	0.26	26	0.4	0.36	0.26	60	IP54
200	175	0.7	78	0.45	0.38	0.33	60	IP54
250	210	0.6	75	0.36	0.29	0.2	60	IP54
315	260	0.9	108	0.4	0.35	0.29	60	IP54
400	500	1.1	160	0.3	0.26	0.2	60	IP54
450	800	1.1	247	0.3	0.25	0.2	60	IP54

eTF Series in duct sound power data (dB ref. 10 ⁻¹² W)										*Breakout	
Model	In-Duct PWL	Hz.	63	125	250	500	1k	2k	4k	8k	dBA* @ 3m
150	dB		58	54	54	54	53	54	52	47	21
200			54	57	60	61	60	60	56	54	29
250			55	57	61	59	57	54	51	46	23
315			64	61	64	63	62	60	57	54	31
400			59	62	64	63	60	56	55	50	29
450			59	65	59	61	56	55	50	42	27

Eco-Airvent Limited

Suite 1, 3rd Floor
 11-12 St. James's Square
 London SW1Y 4LB
 Tel: +44 (0) 1234 910844
 Email: sales@eco-airvent.co.uk
 www.eco-airvent.co.uk



Made in the UK